



summerbenefitauktion, bashandexhibitionsrecap

It has been an eventful summer at the Bray. The North Gallery, the Pottery Gallery and the Warehouse Gallery were overflowing with functional, sculptural and installation artwork, making the Bray an exciting place for all those who visited.

residentscholarshipbenefit auktionandresidentexhibition

The Warehouse Gallery was full of artwork in June and July, showcasing the work of the Resident Scholarship Benefit Auction and the annual Resident Artist Exhibition which featured artwork by our 10 long-term residents and our 10 summer residents.



2008 Resident Artist Exhibition, Warehouse Gallery

For the second consecutive year, the Resident Scholarship Benefit Auction was divided into three sections—the silent auction, cup auction and live auction. With more than 60 artists participating, the auctions were a great success. The live auction showcased remarkable pieces given by Chris Antemann, Josh DeWeese, Steven Young Lee, Beth Lo,

Warren MacKenzie, Richard Notkin, Takeshi Yasuda, SunKoo Yuh and Jason Walker.

New Bray board member Mike Casey of Helena took the microphone as our auctioneer for the second year in a row. Proceeds from the Resident Scholarship Benefit Auction will help support monthly stipends for current long-term, non-fellowship resident artists.



Mike Casey auctioning a Josh DeWeese jar, 2008 Live Auction

The real stars of the evening were our own resident artists, who dressed up in circus regalia, orchestrated skits and provided entertainment for an evening that made this year's Brickyard Bash unforgettable. Not only did many of the resident artists donate a piece to the auction, but they decorated, strung lights and gave the entire evening a special "Bray quality" that can never be predicted or duplicated. Dancing, catching up with old friends, hitting a "bird's eye" and a spectacular performance by the Big Sky Mud Flaps made this year's Brickyard Bash exciting to the end.

workshopsat thebray2009



Rosalie Wynkoop

Beth Cavener Stichter and Tip Toland
Sculpting Gesture: Animal and Human
June 15–26

Sam Chung
Process & Design:
Handbuilding Slab Pots
August 7–9

Rosalie Wynkoop
More is More:
An Over-the-Top Approach to Majolica
September 25–27

*Registration begins January 7, 2009.
For more information go to our Web site at
www.archiebray.org
Sorry no early registration.*



Residents in circus attire, 2008 Brickyard Bash



Hit the Bird's Eye booth, 2008 Brickyard Bash

We would like to thank Mike Casey, participating artists, staff and volunteers for all your help and support during the events. All of you helped to make the 12th annual Scholarship Auction a great success! Mark your calendar for next year's Benefit Auction and Brickyard Bash, July 25th, 2009.

continued on page 5

director's message



It has been an active year at the Bray and the richness of the summer lingers even as the days grow shorter. As I look back over the accomplishments of the past year and forward to the challenges ahead, I'm overwhelmed by the vast community of friends and supporters who make the Bray such an extraordinary place.

This summer, the Bray was energized with 20 ceramic artists-in-residence from around the world.

Exhibitions, artist lectures and workshops drew even more ceramics lovers and a lot of wonderful artwork was created. The Resident Artist Exhibition showcased a diverse collection of ceramic pieces, providing many people with a chance to see some of the best work being made in the ceramics field today.

July marked the return of the "Brickyard Bash," which celebrated the purchase of the historic brickyard over 20 years ago. Held on the night of the Annual Scholarship Benefit Auction, the residents amazed us with their creativity, dressing up as circus entertainers and making it an unforgettable night as we danced the night away to the tunes of the Big Sky Mudflaps band.

To ensure the success of the Bray's creative community, we continue to work to sustain energy and financial resources and maintain a position of leadership in the field of ceramic art. We have launched an initiative to make our firing facilities more energy efficient and are looking forward to offering a stellar lineup for our 60th anniversary celebration in 2011.

Every decision we make is grounded in commitment to our mission—to provide "a fine place to work" for ceramic artists. I am so grateful to all of you who support us in our efforts. We could not do it without you.

—Steven Young Lee

president's message

As 2008 comes to an end, I would like to let everyone know of some changes that have taken place on the Archie Bray Foundation board of directors. Lin Deola and Jim Kolva have recently retired from the board after nine years of dedicated service. Both Lin and Jim were very helpful in seeing the Bray through the process that led to the construction of the Shaner resident artist studios. On behalf of all the Bray community, I would like to thank both Lin and Jim for their service.

As Lin and Jim leave the board, we are fortunate to have three new members who will begin their tenure this fall. Please welcome to the board Mike Casey of Helena, MT, Mae Nan Ellingson of Missoula, MT, and Sue Ricklefs of Whitefish, MT. I would like to welcome all of you and thank you very much for joining the board.

The Bray had a very busy 2008 with many artists seeking either full-time or summer residency positions. The workshops were well attended and the auctions raised a significant amount of support for the resident artist program. We had a great turnout for the summer auction but always welcome more of our friends to come out to bid. It was a fun and exciting evening and I would like to suggest that you mark your calendar for next July.

The board would like to thank Steven Lee for his hard work and excellent leadership of the Bray. His second year was a very busy one and we look forward to 2009.

As I do every year, I cannot end this message without urging everyone associated with the Bray to become a Friend of the Bray. By doing so, you will help us further the progress we have been making to attract talented artists and achieve our vision of keeping the Bray the premier ceramic residency program. Thank you for your continued support.

—Richard Baiter

archiebrayfoundation

The Archie Bray Foundation was founded in 1951 By Archie Bray, Peter Meloy and Branson Stevenson "to make available for all who are seriously and sincerely interested in any of the branches of the ceramic arts, a fine place to work."

Staff

Steven Young Lee, *Resident Artist Director*
Teresa Amsbaugh, *Development Officer*
Marcia Eidel, *Development Director*
Emily Free Wilson, *Gallery Director*
Tad Henningsen, *Clay Business Production Manager*
Rachel Hicks, *Director of Programs and Administration*
Noreen Lehfeldt, *Accounts and Office Manager*
Aaron Nelson, *Clay Business Consultant*
Peter Rudd, *Clay Business Assistant*
Joshua Rysted, *Clay Business Retail Manager*

Board of Directors

Dick Baiter, *President*
Norma Tirrell, *Vice President*
Jess Parker, *Secretary*
Margaret Woo, *Treasurer*
Dan Anderson
John Balistreri
Wally Bivins
Toni Broadbent
Sally Brogden
Mike Casey
Mae Nan Ellingson
John Green
Ayumi Horie
Beth Lo
Alan Nicholson
Sue Ricklefs
Jon Satre
Ann Shaner
Bobby Silverman
Rebecca Sive

Former Resident Directors

Rudy Autio
Lilian Boschen
Gene Bunker
Dave Cornell
Josh DeWeese
Ken Ferguson
Carol Roorbach
David Shaner
Peter Voukos
Kurt Weiser

The Archie Bray Foundation is a 501(c) 3 corporation. Contributions are tax deductible. Tax ID#81-0284022. For information about membership, the resident artist program, community ceramics classes, or any aspect of the Bray's operations, call or write:

Archie Bray Foundation
2915 Country Club Avenue
Helena, Montana 59602-9929
406/443-3502 fax: 406/443-0934
e-mail: archiebray@archiebray.org
Web site: www.archiebray.org

braychinatour

Build unforgettable memories and valuable alliances while exploring the art and cultural heritage of China with Steven Young Lee. The Bray's first Asian tour, organized at the invitation of the China Workers' Center for International Exchange (CWCIE) in Beijing, is a VIP networking program supported by the Chinese Government. The trip will bring together Chinese ceramic arts professionals and their North American counterparts to exchange ideas and information. Join us for this unique opportunity to make personal connections with ceramic arts educators and contemporary artists in China.



Large pot factory in Jingdezhen

The program will include visits to the cities of Beijing, Xi'an, Jingdezhen and Shanghai with an optional post-program extension to Lhasa. For the complete itinerary and costs (excluding airfare), visit the Bray Web site www.archiebray.org. An initial deposit of \$600 is due by January 20 with the balance due in March.

newwebsiteatthebray

The Bray launched a new Web site in May of this year. Improved navigation, updated information and images help to keep you informed with everything happening at the Bray. You can also sign up on our e-mail list to receive regular updates on classes, workshops, exhibitions and sales. Stay tuned for our new online donations and sales capabilities!



e-mailupdates

Don't miss another event, workshop or class. Stay in touch with what is happening at the Bray. Sign up today to receive e-mail updates and online news.

Go to www.archiebray.org or e-mail contact@archiebray.org.

greeninitativesatthebray

In an effort to reduce the carbon footprint of the organization, the Bray recently made improvements to its campus-wide recycling program. The Bray will work with local Helena recycling organizations to collect all of the glass, aluminum, paper, cardboard and plastics used on site. In addition to the recycling efforts, the Bray has instituted a composting system that breaks down the raw foods from the kitchen to be used as compost in the community gardens. This has reduced the overall waste in the kitchen while providing nutrients for the vegetable and flower gardens. These steps continue our commitment toward making the Bray a more earth-friendly place.



New recycling containers

In May, Donovan Palmquist taught a kiln-building workshop that brought a brand new salt kiln to the Bray. A special thanks to Palmquist and the hard-working workshop participants. The new salt kiln not only provides a needed improvement to the kiln facility, but also significantly reduces natural gas consumption in comparison to the old salt kiln.



New salt kiln



The Meloy Stevenson Award of Distinction acknowledges outstanding service to the Archie Bray Foundation and is granted to individuals whose commitment has helped to sustain the Bray as "a fine place to work." Resident Artist Director Steven Young Lee presented the 2008 award to **Richard Notkin** (left) and **Robert Harrison** (right) at the Bray annual auction in July.

2008 new long-term residents

This fall brought two new long-term residents to the Bray. We are happy to welcome Nathan Craven and Kevin Snipes.

nathan craven mjd fellow

Nathan Craven comes to the Bray from Ogden, Utah. Just before Nathan arrived at the Bray he received his MFA from the Rhode Island School of Design and his BFA in Ceramics from Weber State University. Over the past couple of years Craven



has produced nearly 10,000 extruded ceramic units. Through the act of arranging, stacking, balancing and connecting the porous ceramic units, he invites the viewer to experience how a wall or floor might contain space and direct flow through space in new ways. Craven states, "In my work, extruded forms function both as decoration and as structure. Depending on their context, they become floors, windows screens and room dividers. This architecture is not merely decorated; it actually grows from decoration."



Nathan Craven, *Cabinet 2*

has produced nearly 10,000 extruded ceramic units. Through the act of arranging, stacking, balancing and connecting the porous ceramic units, he invites the viewer to experience how a wall or floor might contain space and direct flow through space in new ways. Craven states, "In my work, extruded forms function both as decoration and as structure. Depending on their context, they become floors, windows screens and room dividers. This architecture is not merely decorated; it actually grows from decoration."

kevin snipes taunt fellow

Kevin Snipes received his MFA from the University of Florida in 2003 and his BFA in Ceramics from the Cleveland Institute of Art. Snipes has been living in Cleveland, Ohio, for the past couple of years where he has been a studio potter and an adjunct teacher of ceramics at the Cuyahoga Community College. Snipes has received multiple residencies and awards including the Individual Excellence Award from the Ohio Arts Council and residencies at Watershed Center for Ceramic Arts, the Clay Studio in Philadelphia and Worcester Center of Crafts.



Snipes states, "I like to think of my work as 'sweet and spicy'; not too much of either, with a good dash of humor. There is an uncertain sense of edginess or mystery that offers the viewer just enough information, so that they can extrapolate his or her own stories."



Kevin Snipes, *ZigZag Box*

2008–2009 fellowship awards

The 2008-2009 Fellowship recipients will begin their fellowships this fall. Selected from a highly competitive field of candidates, the Lilian Fellowship was awarded to **Donna Flanery**, the Lincoln Fellowship went to **Birdie Boone**, **Kevin Snipes** received the Taunt Fellowship, **David Peters** received the Matsutani Fellowship and **Nathan Craven**, will be the first recipient of the newly established MJD Fellowship.



David Peters, *Flower Serving bowl set*



Birdie Boone, *Frost Bites*

Each fellowship awards \$5,000 and a one-year residency at the Foundation to artists of exceptional accomplishment and promise. Beneficiaries are expected to embrace the Bray experience of community and exchange, and have the opportunity to focus their attention toward producing and exhibiting a significant body of work.



Donna Flanery, *Elephant Jar*

apply online

Applicants for the 2009 Fellowships and Residencies can now apply online. Go to our Web site, www.archiebray.org, and click on Artists Residencies.

The Bray will still accept mail-in applications in 2009. Guidelines and application forms are available online or by contacting the Bray office.

All applications for the 2009 Fellowships and Residencies are due to the Archie Bray by March 2, 2009.

Archie Bray Foundation
2915 Country Club Avenue
Helena, Montana 59602



2008 residents

Back row, left to right: Steven Young Lee, Donna Flanery, Gwendolyn Yoppolo, Nicolas Darcourt, Shay Church, Nathan Craven, Martha Grover, David Peters, Peter Morgan, Chadwick Augustine, Jeremy Hatch, Karl McDade and Kensuke Yamada.

Front row, left to right: Hiroe Hanazono, Birdie Boone, Anne Drew Potter, Brendan Tang, Renee Audette and Brian Rochefort.

Not pictured: Paul Maseyk and Dana Major Kanovitz

2008 auto award recipients

After the passing last fall of the ceramic legend Rudy Autio, his family and the Bray established the Rudy Autio Endowment for Creative Initiatives. This fund provides support for projects that allow an individual resident artist or the resident artists as a group to challenge themselves, push boundaries, explore new ideas and take creative risks. This summer a three-person panel comprised of Steven Young Lee, Josh DeWeese and Kurt Weiser, selected the first Auto Award recipients. Three resident artists were granted the award in 2008. The vision and variety of the projects selected reflects the depth of the Bray experience as well as the vitality of the field of ceramic art.

David Peters will use his Auto grant to purchase a hammer mill that will allow him to process local clays and materials more efficiently, giving him time to produce more work. "Indigenous materials offer unique results and can create a meaningful connection to place," Peters said. "I passionately believe that the use of locally obtained materials will be important in the future due to the rising price of oil and the crucial task of reducing our carbon emissions."



David Peters, *Basket*

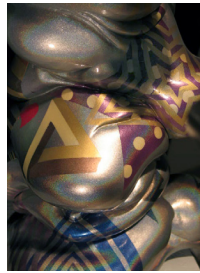
Anne Drew Potter received a grant to support her first effort at incorporating sound and interactivity into her work. According to



Anne Drew Potter, *Tar Baby II*

Potter, the multimedia installation, *The Judgment of B'r'er Rabbit*, is designed to "call into question issues of judgment, justice, race and cultural mythology in contemporary U.S. culture." It involves four figures representing characters from the well known African/African American folktale, presented on custom pedestals. An interactive system will trigger the playback of an audio recording as the viewer approaches each Tar Baby, and if the viewer moves through the space rapidly, all three stories will play simultaneously. Potter plans to exhibit the installation at Lill Street Gallery, Chicago, in February 2009.

Brian Rochefort's work consists of multiple layers of color and pop culture iconography, for which a pristine surface is important. Rochefort will use his Auto grant to purchase a professional paint gun to begin using auto lacquers on his "Rock Star Energy Gloops." This represents a significant advancement in his surface treatment, allowing him to dramatically improve the quality of the finish. According to Rochefort, "Auto paint... greatly surpasses spray paint in terms of finish quality, and will allow me a more diverse palette with which to work."



Brian Rochefort, *hijinx_40_09_985 (detail)*

If you would like to join the many others who have given to the Rudy Autio Endowment for Creative Initiatives at the Archie Bray Foundation, please contact Marcia Eidel at 406/443-3502, ext.17, or marcia@archiebray.org.

beyond the brickyard



The first annual Beyond the Brickyard juried exhibition received over 200 entries. Juror Patti Warashina, the Bray's 2008 Voulkos Fellow, was very impressed with the quality and range of work submitted. Warashina selected 35 pieces, which will be on display in the North Gallery January 31–March 15, 2009.



Ben Bates, *Tea Box*

Awards will be announced during the opening reception, Saturday, January 31st. Please join us at the Bray for this exciting exhibition or view artwork online beginning in January at www.archiebray.org. Thank you, Patti Warashina, for sharing your time and experience with the Bray, and to all who entered and supported the Bray in order to make this exciting exhibition possible.

summer benefit auction, bash and exhibitions recap

continued from page 1

farewell exhibitions

Along with the successful Auction and Resident Artist Exhibition, the Bray hosted Farewell Exhibitions for Jennifer Allen in May and Nicolas Darcourt in August. Both exhibitions



Jen Allen Farewell Exhibition

were on display in the newly renovated North Gallery and provided a chance to see the work of two

residents who have spent their time at the Bray developing their artwork and becoming a part of the Helena community. We wish Jen and Nick good luck in their upcoming adventures.

2007–2008 fellowship exhibitions

In August our 2007-2008 Fellowship artists—Renee Audette, Jeremy Hatch, Anne Drew Potter and Brian Rochefort—displayed their installation and sculptural artwork in the Warehouse Gallery. This annual exhibition gives fellowship recipients an opportunity to share the body of work developed during their Fellowship year at the Bray.



2007–2008 Fellowship Exhibition



1,000 pound Bray clay box at Brickyard Bash 2008

joinarchiebraytoday

The Bray is proud to have members from all over the world—artists, collectors, students, appreciators. We want you to be a part of this great group of people who make the Bray such a fine place.

How Your Gift Supports the Bray

☐ Friends of the Bray (\$1,000 and above)

- \$12,200-Supports a resident for one year: studio expenses, communal materials, and fellowship stipend
- \$7,200-Annual studio expenses for one long-term resident
- \$4,000-Utilities for one month
- \$3,500-Gallery supplies for one year
- \$3,000-Sponsorship of one visiting artist
- \$2,000-Annual computer expenses
- \$1,800-Annual studio expenses for one summer resident
- \$1,100-Insurance for one month

☐ Benefactor (\$500 – 999)

- \$730-Freight expenses for one week
- \$600-Studio expenses for one resident for one month
- \$500-Annual community class supplies

☐ Patron (\$250 – 499)

- \$454-Telephone expenses for two weeks
- \$335-Postage and delivery expenses for two weeks
- \$250-Communal glaze and ceramic supplies for one month

☐ Sponsor (\$100 – 249)

- \$200-Stipend for one resident for one month
- \$150-Studio expenses for one resident for one week
- \$100-Stipend for one resident for two weeks

☐ Member (\$35 – 99)

- \$80-Advertising expenses for five days
- \$60-Studio expenses for one resident for three days
- \$35-One subscription for newsletter and exhibition invitations

Name and contact information as you wish it to appear in membership listing:

Name _____

Address _____

City _____

State _____ Zip _____

Phone _____

E-mail _____

Enclose check or money order payable to the **Archie Bray Foundation, 2915 Country Club Ave, Helena, MT 59602**

Please charge: Visa MasterCard AMEX

Cardholder's name _____

Account # _____

Exp. date _____ Amount charged _____

Thank you for your support.

Tax ID# 81-0284022

braybusinessallianceprofile

NOTE: *The Archie Bray Business Alliance is a group of businesses, large and small, that recognize the value of the Bray to Helena's economic and cultural vitality and join together in its support.*

At **Eaton Turner Jewelry Company**, creative



Corey Johnson

expression is a family affair. When metalsmith Don Johnson purchased the 123-year-old business in 1996, his high-school-aged son, Corey, had already taken an interest in helping out. Corey enrolled at Montana State University in fine arts to study graphic design but worked at the Gem Gallery in Bozeman during his last year in school. There he gained technical training in the jewelry business, and when he graduated from MSU in 2000, Corey returned to the family business "just to see how things would work out."

For three consecutive years, Corey's jewelry designs were named "Best of Show" by the Wyoming-Montana Jewelers of America. He had clearly found his life's pursuit.

"I enjoy working with my hands and get a lot of satisfaction from seeing the finished product," he said. It's amazing to see people's joy when they see a piece. Last week a woman was so happy with a custom ring I created she just had to give me a hug."

The Johnsons' commitment to creative expression extends to their community. Last year Eaton Turner Jewelry Company was one of the first to commit as a Charter Member of the Bray Business Alliance. "Our family believes in creative expression and the importance of the arts to the community," said Corey. "My dad started in ceramics and knew many people who worked at the Bray."

Corey also has a strong sense that the Bray makes a measurable contribution to Helena. "The Bray allows for new people with new artistic ideas to come to the community," he said. "And Bray artists are always donating their time and work throughout Helena. It's pretty evident that the Bray artists are involved."

thankyouvolunteers!

With all the exciting happenings at the Bray, we could not get it all done without our dedicated volunteers. Thank you to everyone who donated their time and talents to keep the Bray the way it is. We hope we haven't missed anyone, we appreciate all of our volunteers and are so thankful for their help. **Thank you! Thank you! Thank you!**



2008 Volunteer Appreciation Party

Daniela Abel	Mary Kinzer-Johnson
Ronja Abel	Steph Knisley
Elizabeth Allen	Shannon Koenig
Gordon Amsbaugh	Carmen Kurushima
Gary Anderson	Mary Lee Larison
Tim Ballweber	Erik Lehfeldt
Kristin Best	Noreen Lehfeldt
John Board	John Losey
Becca Bredehoff	Brian Magee
Pat Broderick	Linda Mason
Shawna Brodrick	Sue McNicol
Bill Brown	Cyndy Meyer-Payiva
Jan Brown	Nathan Mills
Renee Brown	Kelly Myhro
Susan Brunner	Blackie Nelson
Liz Burritt	Sarah Ozment
Jim Caravello	Zach Owen
Mike Casey	Mary Ann Parvinen
Chip Clawson	Jan Paustian
Bill Davis	Jesse Peterson
Donna Davison	Carla Potter
Josh DeWeese	Elizabeth Ralston
Clare Dreyer	Wilbur Rehman
Gregg Edelen	Emily Ruffo
Bobby Free	Lori Satterfield
Alfonso Gerbolini	Bill Shupe
Midge Golner	Tim Stepp
Terri Gregg	V J Supera
Marci Heigh	Chris Taleff
Celinda and Paul Hicks	Judy Thompson
Miranda Howe	Cheri Thornton
Sarah Jaeger	Norma Tirrell
Joe Kansier	Amanda Vetter
Joanne Kaucher	Blair Williams
Alex Kraft	Matt Wilson
Donnie Keeton	Ron Wilson
Page Kelly	Rosalie Wynkoop

newboardmembers

The Archie Bray Foundation is glad to welcome three new members to the board of Directors—Mike Casey of Helena, MT, Susan Ricklefs of Whitefish, MT, and Mae Nan Ellingson of Missoula, MT.

Susan Ricklefs was first introduced to the Bray in 1997 while working in the gallery in



Whitefish and as a ceramic artist herself. Ricklefs began to enhance her ceramic education through the summer workshop program at the Bray and has been a part of many workshops over the years. When asked to serve on the Bray board of directors, she was excited to become a part of the vision and direction of the institution. Ricklefs says she has “always felt that the greatest strength of the Bray is the people with whom it is associated. That encompasses past and present residents, directors, staff and collectors. In addition, the focus on clay alone as a medium has been a very powerful force.”

Mike Casey is a commercial real estate broker and co-owner of the Trimac Group. He first visited the Bray for a Brickyard Bash in the early 80s. Casey was surprised by the number of friends he had



that were already associated with the Bray and soon began to collect ceramics, attend exhibition openings and volunteer at events. Casey is excited to be a part of the board and says he would “like to see the physical plant further developed and to see the staff positions supported as much as possible. Also, I believe there is still a relatively low-key awareness of the Bray in the minds of many locals but it’s a significant gem not only to protect but to share.” Casey believes “the greatest strength of the Bray is its people (past, present and extended circle of friends).”

Mae Nan Ellingson has been an attorney with the firm of Dorsey & Whitney for the past 25 years. Ellingson brings her extensive legal



and financial experience along with her love of ceramics and enthusiasm for the Bray. She is excited to participate in a more direct way by being a board member. “I want to learn more about the operations and finances of the Bray and have a hand in helping it meet challenges and opportunities that will

confront it (the Bray) in the next few years.” Ellingson has been a regular visitor to the Bray for the past 20 years. She loves “everything about it: the grounds, its mission, the wide range of ceramics and artists it has supported over the years, the people who have fostered its development and continue to do so.”

retiringboardmembers

This past summer marked the retirement of two wonderful board members, Lin Deola of Helena, MT, and Jim Kolva of Spokane, WA. The tenures of both Lin and Jim included invaluable support throughout many major changes that the Bray experienced during this time.

Lin Deola, an attorney at Reynolds, Motland Sherwood in Helena, first came to know the Bray through community ceramics classes back in 1991. In 1999, when asked to join the board she accepted and states that becoming a board member gave her “the opportunity to work with the organization that from (her) perspective represents the best of Helena.” During her nine-year tenure, Deola was instrumental in fostering the growth of the Bray, which has changed “tremendously” in the time she has served. The most obvious accomplishment of the Board in her mind was the capital campaign and opening of the David and Ann Shaner Resident Studio Complex in 2005. Deola notes all of her experiences with the artists and staff have been rewarding, and her highest hope for the Bray’s future is that it will “continue to move toward representing the finest in ceramics at an international level.”



Jim Kolva has also retired after a nine-year tenure, one that similarly saw the opening of the



Jim Kolva and Pat Sullivan

Shaner Center, the expansion of the board and the impressive 50th anniversary international celebration that the Bray hosted in 2001. All of these milestones came to fruition thanks to the tireless work of Kolva and his fellow board members. He and his wife, Pat Sullivan, came to know the Bray through their interest in collecting ceramics. Kolva notes that being a board member was extremely rewarding in that it provided access to the residents, allowing him to get to know and become friends with many of them. Equally rewarding for Kolva has been

seeing young residents move on from their time at the Bray into careers as accomplished artists and educators. Kolva and Sullivan have personally supported resident work by hosting an annual exhibition in Spokane at their gallery, the Kolva-Sullivan Gallery, for the past eight years. Kolva’s advice to future board members includes, “letting the Bray seep into you and enjoying the experience.” For the Bray’s future, he hopes that it “continues to be a great place for artists to work and have the time to discover new directions and paths and resolve artistic challenges.”

Both Lin Deola and Jim Kolva have been fundamental in many of the Bray’s improvements in the past decade. Their insight, wisdom, support and warmth have been truly appreciated by the staff, residents and fellow board members, and we wish them all the best and hope for their continued involvement with the organization.



Exhibition at the Kolva-Sullivan Gallery, October 2008

2008brayannualfund

The success of the Archie Bray Foundation lies in the vast community of friends and supporters who make it such an extraordinary place. And everything we do together is grounded in our commitment to provide “a fine place to work” for ceramic artists.

The Bray Annual Campaign is an opportunity for all of us to come together in support of the residency program, educational outreach, kilns, facilities and daily activities. If you haven’t yet made your gift, won’t you take a moment right now to help us sustain the Bray. You can make your gift easily and securely online at www.archiebray.org, by calling 406/443-3502, ext. 17, or by sending a check to Archie Bray Foundation, 2915 Country Club Ave, Helena, Montana 59602. Thank you for your generosity and friendship.

archiebrayholidayexhibitionandsale



**Archie Bray North Gallery
November 20–December 20**

Opening Reception:
Thursday, November 20, 6–8pm

As the weather turns colder and the holiday season approaches, it is time to anticipate the Archie Bray Foundation's annual Holiday Exhibition and Sale. Showcasing handmade functional and sculptural ceramic artwork by current and recent Bray residents, the annual Bray sale is the place for all of your holiday shopping.

The Bray Holiday Exhibition and Sale opens in the Bray North Gallery with a public reception on Thursday, November 20, from 6-8 pm. In its fourth season in the North Gallery, the holiday sale has grown in scope, and new artwork is constantly added to the sale. New this year is the ability to shop online at www.archiebray.org. The Holiday Exhibition and Sale is open to the public every day of the week until Saturday, December 20, at 5 pm. To purchase selected work from the Holiday Exhibition and Sale, please go to the Bray Web site at www.archiebray.org beginning on Monday, November 24th.

For more information, contact Gallery Director, Emily Free Wilson at 406/443-3502, ext. 18, or emily@archiebray.org

braygalleryhours • monday–saturday 10am–5pm • sunday 1pm–5pm

archiebrayfoundation presentandpastresidentsexhibitioninchicago



Trey Hill, *All In*, 2008

November 7–9, 2008

Reception: Saturday, November 8, 6 pm–midnight

Please join us in Chicago for an exhibition of over 50 artists from the Archie Bray Foundation's resident artist program—artwork spanning the years between the Bray's beginning until now. Hosted by the Neveca Project.

The exhibition will take place during SOFA Chicago weekend. Check the Neveca Project's Web site for details on times, location and a possible shuttle service from Navy Pier to the exhibition space. A full list of participating artists can be found at www.archiebray.org or www.theNEVICAPROJECT.COM.



archiebraywishlist

The Bray is in need of a few items. Let us know if you have something to donate, or would be interested in donating funds to be used to purchase these items. If you can help, contact Steve at 406/443-3502 ext. 12.

- Flat bed push cart (\$500)
- 5 mega pixel (or more) Digital Camera (\$300-500)
- Angle Grinder (\$75)
- Half-Round Electric Kiln Shelves (\$35-45 each)
- Pyrometer (\$265)



archiebrayfoundation for the ceramic arts

2915 Country Club Avenue
Helena, MT 59602

The Archie Bray is supported by the Montana Arts Council, a state agency funded by the State of Montana and the National Endowment for the Arts.



Partial funding for this project was provided by the Montana Cultural Trust.

Printed on Recycled Paper